

# The Berberis & The Clove

## 2 bedroom homes



Picture shows computer generated image of the housetype for illustrative purposes only and may vary. Please consult the Sales Adviser on site for specific information on homes and elevations. This information is for guidance only and does not form any part of any contract or constitute a warranty.

**For details of this development please call 08459 101011**

or visit our Marketing Suite at: Heron's View, Farnborough Drive, Middlemore, Daventry NN11 8AL.

# The Berberis & The Clove

## 2 bedroom homes

### The Berberis- Ground Floor

#### Lounge/Dining

4.60m x 3.66m (15' 1" x 12' 0" min)

#### Kitchen

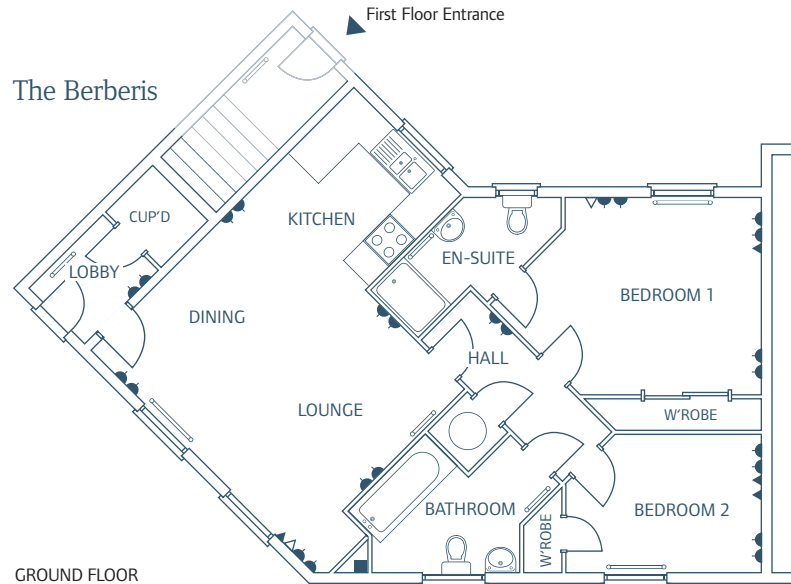
2.40m x 2.10m (7' 11" x 6' 11")

#### Bedroom 1

4.25m x 3.10m (13' 11" x 10' 2" max)

#### Bedroom 2

3.01m x 2.00m (9' 11" x 6' 7" max)



### The Clove - First Floor

#### Lounge/Dining

4.82m x 3.66m (15' 10" x 12' 0" min)

#### Kitchen

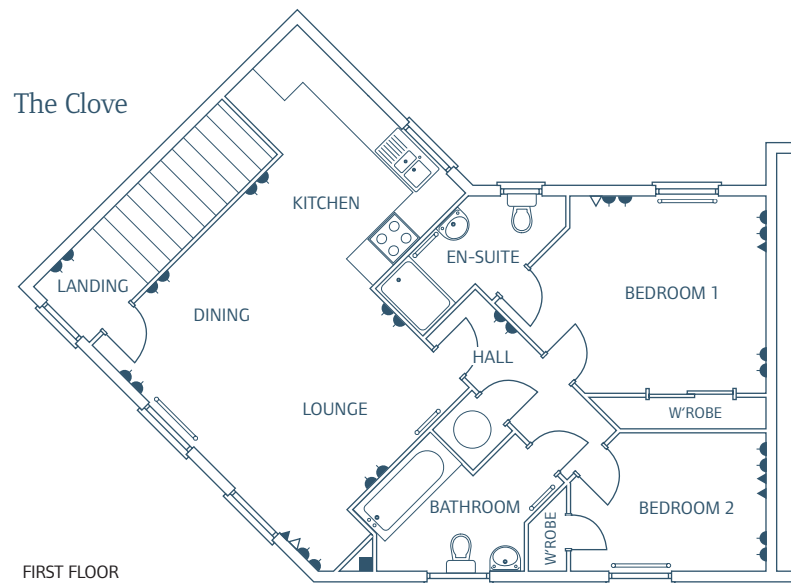
2.92m x 2.10m (9' 7" x 6' 11" max)

#### Bedroom 1

4.25m x 3.10m (13' 11" x 10' 2" max)

#### Bedroom 2

3.01m x 2.00m (9' 11" x 6' 7" max)



**For details of this development please call**

**08459 101011**

or visit our Marketing Suite at:

Heron's View, Farnborough Drive Middlemore, Daventry NN11 8AL.

Persimmon Homes Midlands 3 Waterside Way, Bedford Road, Northampton NN4 7XD.

E-mail: [midlsales@persimmonhomes.com](mailto:midlsales@persimmonhomes.com)

Illustrations are of typical elevations and may vary. All room dimensions are subject to a +/- 50mm (2") tolerance. Kitchen layouts are indicative only. Please consult the Sales Adviser on site for specific elevations, room dimensions and kitchen layouts. This information is for guidance only and does not form any part of any contract or constitute a warranty.